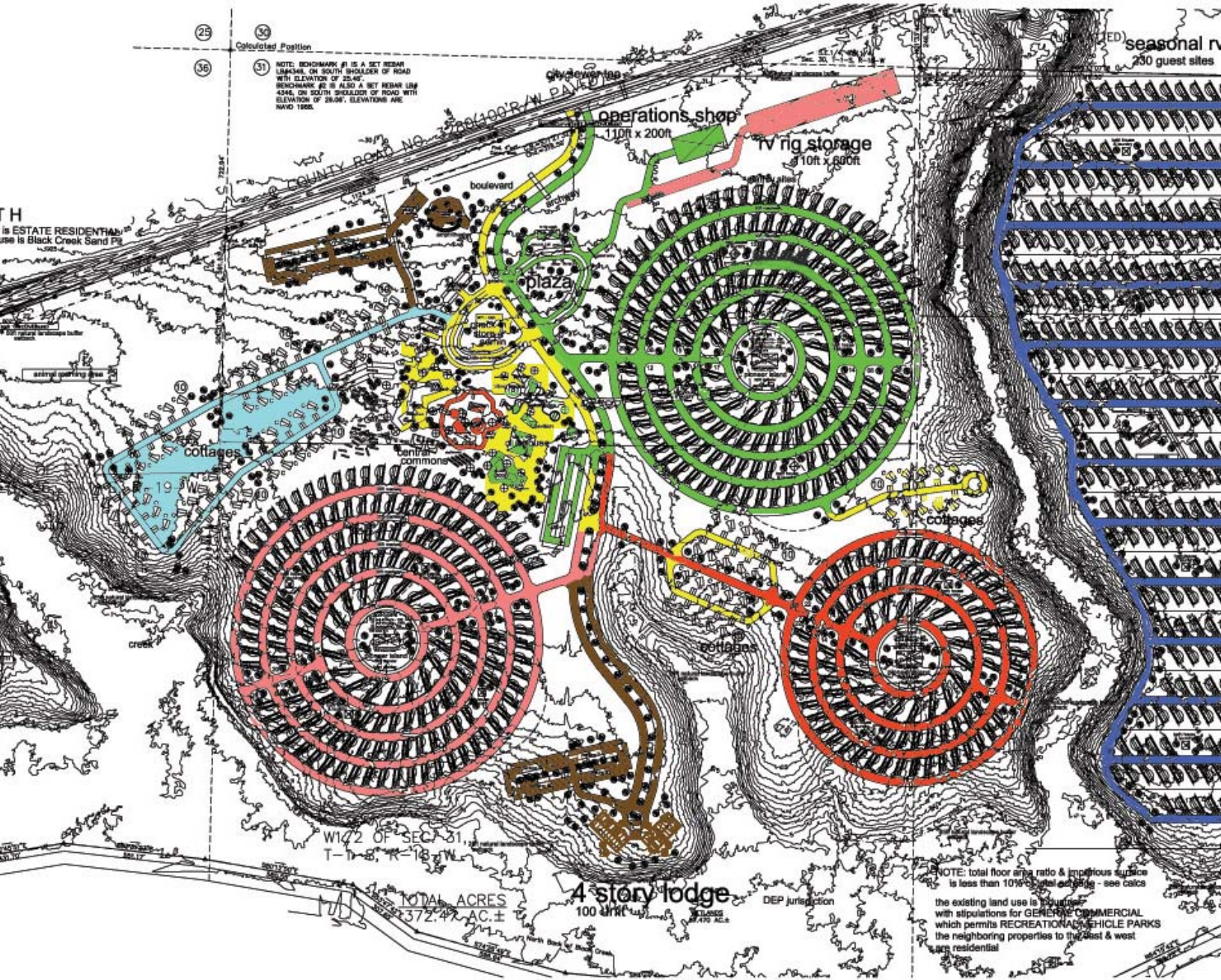


25
36
Calculated Position

NOTE: BENCHMARK #1 IS A SET BEARING
LINEAR ON SOUTH SHOULDER OF ROAD
WITH ELEVATION OF 25.45'.
BENCHMARK #2 IS ALSO A SET BEARING
LINEAR ON SOUTH SHOULDER OF ROAD WITH
ELEVATION OF 26.04'. ELEVATIONS ARE
NAVD 1988.

seasonal r
230 guest sites

TH
is ESTATE RESIDENTIAL
use is Black Creek Sand Pit



19

W1/2 OF SEC. 31,
T-1-S, R-18-W

TOTAL ACRES
372.4 AC. ±

4 story lodge
100 units

DEP Jurisdiction

NOTE: total floor area ratio & impervious surface
is less than 10% total acreage - see calcs
the existing land use is primarily
with stipulations for GENERAL COMMERCIAL
which permits RECREATIONAL VEHICLE PARKS
the neighboring properties to the east & west
are residential